

A fundraising performance
in aid of the SOTA Endowment Fund

impoct



Location
SOTA Drama Theatre

Date / Time
11 November 2022, 7:30pm



sota
SCHOOL OF THE
ARTS SINGAPORE

DIRECTOR'S MESSAGE




It is always an exciting thing when young creative people make their own original artistic material. We are reminded how rich their world is, how deep their thoughts are, how big their questions are, and how broad their artistic vocabulary is. When they put aside formal assessments, and create something that draws from genuine inspiration and aspiration, we know that something extra special is coming. This has been the case for the *Impact* process, where we approached a range of students and alumni from the different art forms, inviting them to create fresh new works for today's event, all of them in response to the work of local artist Tang Da Wu.

What also makes this *Impact* process exciting, is that we then start to connect these students and their works together, to create a larger assemblage of works, telling a larger story, gesturing to larger questions and ideas. Soon we have Literary Arts students and Theatre students performing words written by Literary Arts students. We have Dancers creating choreography in response to original compositions created by Music students. We have Film-makers creating works about the process of Dancers and Visual artists, and so on.

I am so glad Tang Da Wu kindly agreed to let us sit closely with his works over the past year, and respond to them. His body of work has proven to be such a rich world of enquiry. There is warmth, playfulness, boldness and connectedness to his works. Connection to nature, to self, and community.

Today is an invitation to sit under the banana tree, and share and listen to each other wholeheartedly. We trust that through this experience, our students and alumni will draw significant inspiration from Da Wu, as well as share some of it with you, to take away with you today.

Sean Tobin
Artistic Director
Impact 2022



The SOTA Endowment Fund

With a vision to nurture creative citizens for the future who positively impact Singapore and the world, the School of the Arts, Singapore (SOTA) believes in providing a conducive and vibrant learning environment that is anchored in the arts.

Like the roots of a tree, the SOTA Endowment Fund was set up in 2019 to serve as a strong foundation towards growing a self-sustainable source of funds for the school in providing our students with bursaries, scholarships and other financial assistance. The fund ensures that SOTA's unique arts education remains accessible so that no child gets left behind due to financial disadvantage.

Find out how you can donate at <https://bit.ly/SOTAImpact22> or scan the QR code!



Every Gift Matters.



PROGRAMME

Under the Banana Tree

Written by Sophie Ang Jia Shuen
(Year 3, Literary Arts)

Performed by Bernadette Koh
(Year 5, Theatre)

Impact - Inspiration

Filmed and edited by The Loaf Collective
(Film, Theatre and Visual Arts Alumni)

IDENTITY

Transit

Performed by Koko Kusano, Tiana Lea Campbell, Mila Jade Thiagarajan, Uthara Vivek, Chen Huiyao (Year 3, Theatre)

Facilitated by Ms Marianne Sim

Sometimes A Compromise is A Sprained Ankle and A Cyst in Your Knee

Concept, choreography and sound by Ashley Ho-as-proxy
(Alumna, Dance)

Performance by Jozef Chua-as-proxy (Alumnus, Dance)

Costume design in collaboration with Gabrielle Angela Anderson
(Year 4, Theatre)

Hey ho here they come

Composed and Performed by Jackson Lee Tobin (Year 3, Music)

Performed by Ashley Tham Yun Ying, Emily Kam, Jillian Marie Loh Hui En, Miko Seah Jia En, Von Tay Yu Man (Year 4, Dance)

COMMUNITY & CAUSE

can the ordinary tell a story?

Prose poetry inspired by Tang Da Wu's 'The Supreme Game',
written by Quek Chi-E (Year 3, Literary Arts)

Performed by Bernadette Koh & Magdalene Ng (Year 5, Theatre)

Music by Miya Figueroa (Year 2, Music)

Lone

Concept, Choreography and Performance by Joan Dwiartanto
(Alumna, Dance)

Cinematography by Han Xin Yi (Alumna, Dance)

SFX and Foley by Julian Buitrago

Music: THE VOLUMES: III. Lone by Ben Sellick

Dancing in the Dark

Performed by Farah D/O Haja Nazemuddeen, Salonee Narang,
Jadrian Hurley, Dayang Nurbalqis Shahrul Hakiem (Year 5, Theatre)

Multimedia by Eli Ismail (Year 5, Theatre)

Directed by Ms Serena Ho

PROGRAMME

Impact - Creation Filmed and edited by The Loaf Collective (Film, Theatre and Visual Arts Alumni)

THE ENVIRONMENT

Nocturne of the Sembawang Phoenix Composed by Teo Kang Lee, Kenny (Year 4, Music)
Performed by Pay Jia-En Anastasia Atarah (Year 1, Music)

Untitled (X) Written by Terrell James Ng (Year 3, Literary Arts)

Performed by Koko Kusano, Tiana Lea Campbell, Mila Jade Thiagarajan, Urmila Devi, Chen Huiyao (Year 3, Theatre)

Music by Jackson Lee Tobin (Year 3, Music)

Trees as Historical Records Written by Terrell James Ng (Year 3, Literary Arts)

Performed by Terrell James Ng and Meagan Tan (Year 3, Literary Arts)

Music by Jackson Lee Tobin (Year 3, Music)

Raw Composed and performed by Miya Figueroa (Year 2, Music)

Performed by Miko Seah Jia En, Von Tay Yu Man (Year 4, Dance)

Sediment Art direction by Amber Lim, Andrew Huang and Emma Tay (Year 6, Visual Arts)

Choreographed and performed by Hanna Qistina (Year 5, Dance)

Film by Joshua Sng, D'Oliveira Wey Han Chua (Year 6, Film)

Terr(A)qua Choreographed by Hanna Qistina (Year 5, Dance)

Performed by Kenzo Seah Jia You (Year 5, Dance) and Jozef Chua (Alumnus, Dance)

Music composed by Charlene Cloud Tan (Year 5, Music)

Impact - Reflections Filmed and edited by The Loaf Collective (Film, Theatre and Visual Arts Alumni)

Me Metal Sculpture
152cm x 80cm x 50cm
Na Byungha (Year 5, Visual Arts)

Phoenix Rising Metal sculpture
200cm x 150cm x 200cm
Zhu Di (Year 5, Visual Arts)



Doing well, doing good

Keppel aims to deliver lasting social, economic and environmental benefits to the communities where we operate.

We invest in worthy causes that resonate with the Company's values, which include caring for the underprivileged, empowering lives through education, protecting the environment and nurturing creativity and an appreciation for the arts among children and youths.

Building a sustainable future

www.keppcorp.com

 Keppel



VOICES



Ashley Ho

Sometimes A Compromise is A Sprained Ankle and A Cyst in Your Knee

Ashley is a dance alumna from the class of 2017 and is currently pursuing her studies in Dance at ArtEZ University of the Arts in the Netherlands. For her piece, Ashley collaborated with fellow dance alumni Jozef Chua, who graduated from SOTA in Year 4 in 2021 to pursue Dance. As Ashley is based overseas, their discussions and rehearsals could only take place virtually. Though only meeting for the first time to work on this piece, Ashley and Jozef overcame the various challenges and have through this process developed a conversation beyond the context of creating this work.

“What strikes me most about Tang Da Wu’s work is an immediacy to sociopolitical shifts and acute experiences of personal and collective loss. His work responds boldly, earnestly, and playfully....Jozef performs “as proxy” for me, in the same way that I am making the work “as proxy” for my projection of Tang Da Wu, who has performed “as proxy” for various groups of people, animals, objects, spaces, landscapes. This process with Jozef, responds to the tensions inherent in policymaking, and explores the problematics of the “neutral body” that remains foundational in contemporary movement practice.”



Eli Ismail

Dancing in the Dark

Eli is a Year 5 International Baccalaureate Career-Related Programme (IBCP) Theatre student. She produced the multimedia for the piece *Dancing in the Dark*, performed by a group of Year 5 Theatre students. Eli engaged the SOTA community to find out what changes they wished to see in Singapore or globally. Through the performance, she hopes to incorporate their thoughts and voices to truly represent their generation.

“I will be using multimedia to connect the symbol of fire to our performance. To me, protests are like fire because of how it starts and spreads. In contrast, small flames are used to light candles when communities remember their loss. Inspired by “Dancing in the Dark” by Bruce Springsteen, the small flames dancing in the dark symbolise communities’ gentle but powerful spirit of fighting and persevering.”



Hanna Qistina

Terr(A)qua

Hanna, a Year 5 International Baccalaureate Career-Related Programme (IBCP) Dance student, is choreographing two dance pieces for Impact 2022, and she will be performing one of the pieces on stage in response to an artwork by the Year 6 IBCP Visual Art students. *Terr(A)qua* is inspired by Tang Da Wu's passion in expressing concern about environmental and social issues through his art. For Hanna, the exploration, creation, and collaboration process have been the most interesting and fulfilling.

*"It was really interesting to me that in his Earth Works Series, Tang Da Wu left the works completely up to nature leaving the outcomes all really unique and special. So what I am trying to explore in my piece, *Terr(A)qua*, is the cause-and-effect phenomenon in nature; how soil and water can shape and change each other through different ways. I hope the audience can recognise the difference in the two bodies/materials but at the same time how the two complement each other and mould toward each other when in close proximity."*



Amber Lim, Andrew Huang, Emma Tay

Sediment

Year 6 IBCP Visual Arts students Amber, Andrew and Emma created a performative art installation, *Sediment*, with the collaborative help of students from Dance, Music and Film. As Visual Arts students, working with more performative disciplines for this piece enabled them to think more about movement and space to bring a new dimension to their work.

"For our piece, we experimented with the organic process of absorption in a natural environment, while relying heavily on the element of "chance" to create spontaneity. Through the incorporation of stage visuals, ambient music and a live dance performance, we are exploring how an interdisciplinary piece can correspond and react to each element within itself."

Kenny Teo

Nocturne of the Sembawang Phoenix

Year 4 Music student, Kenny, took inspiration from a sculpture by Tang Da Wu, and challenged himself to compose music for the guzheng in an unconventional way. Year 1 Music student, Anantasia Pay will be performing his piece. This is Kenny's first interdisciplinary work, drawing inspiration from a sculpture and incorporating and expressing its elements through the medium of music. He hopes that through his piece, the audience can see the connections that can be made between artforms.



"When I first explored Tang Da Wu's Sembawang Phoenix, I was interested in the name itself, Sembawang being a place in Singapore, and the Phoenix as a mythological symbol of rebirth. I then learnt that the work was based on the location of The Artists Village where it was founded (Sembawang), and that the bird in the artwork was based-off the large-tailed nightjar, which chirped with a 'tok-tok' sound regularly around the evening to night hours when Tang Da Wu lived there. These ideas formed the main inspiration for my piece - utilising percussive elements on the guzheng to simulate the bird call, a ternary structure to simulate the 'death' and 'rebirth' of a theme, and a relaxed vibe evocative of night time through elements of the nocturne form."



Terrell James Ng

Trees as Historical Records

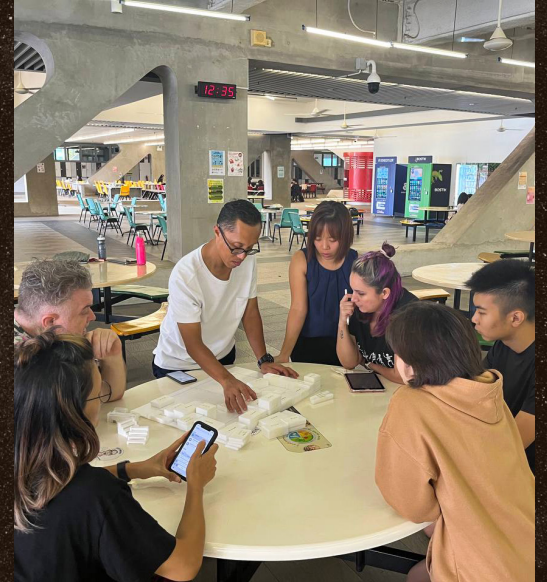
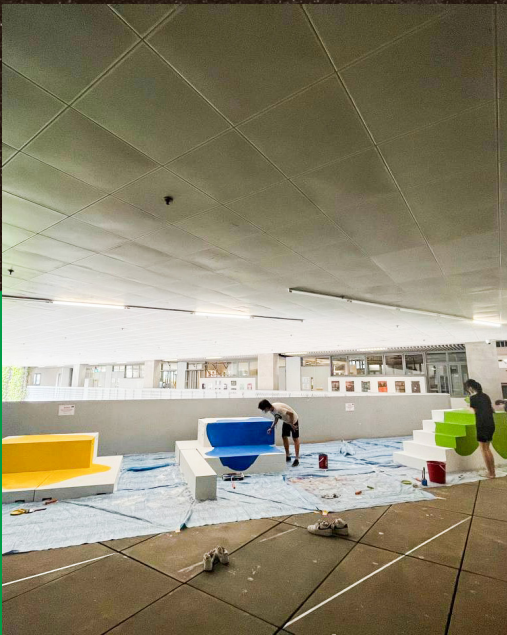
Year 3 Literary Arts student, Terrell James (TJ), wrote the poem *Trees as Historical Records*, which he will be performing with his Literary Arts classmate, Meagan Tan. As a Literary Arts student, learning how to perform his written work was something new for TJ. Through the process of performing, he developed a deeper understanding of his work and its meaning.

"When I first started exploring Tang Da Wu's work, it got me thinking about nature as an existence with multiple conflicting identities. On one hand, nature outlives us all, and has played a very maternal role in our story as humankind. On the other hand, nature is the victim of humans' greed and malice. The process of performing "trees as historical records" has allowed me to better understand its meaning—the inherently tug-of-war, back-and-forth nature of nature's clashing identities. The idea of an undecided future, and in that also a thin mist of hope."

AMBASSADORS COMMUNITY BUILDERS CREATORS DIALOGUE FACILITATORS STORYTELLERS



Photo credit: Misha Ghosh (Year 5, Theatre)



OUR APPRECIATION

Artistic Director
Mr Sean Tobin

Project Manager
Ms Valerie Pereira

Production/ Stage Manager
Ms Alycia Finley

Set Designer
Mr Mohd Fared Bin Jainal

Multimedia Operator
Mr Pung Yu Qing

Sound Engineer
Mr Joseph Chian

Teacher Mentors
Ms Foo Yun Ying
Ms Grace Chia
Mr Gu Wei
Dr Jeanine Lim
Ms Marianne Sim
Ms Serena Ho
Dr Vincent Leow

Production Assistants
Ms Melissa Ho
Ms Tiara Emily
Alvan Tan (Year 4, Theatre)

Lighting Design
Mr A Kumarran

Publicity Design
Achromatic Studio

Documentary Film
The Loaf Collective

Student Performers and Creators (see programme for names)

Student Volunteers who helped in various ways behind the scenes including photography, set painting, usher duties and production

And all who have contributed in one way or another to Impact 2022

Special Thanks

Presented By

Mr & Mrs Chan Wing To

Platinum Donor



Supporting Donors

ALLEN & OVERY



Live more, Bank less

Dr Lee Boon Yang
Patron, SOTA Endowment Fund

Tang Da Wu

Charmaine Toh
National Gallery Singapore

Clariss Tan and Emma Grace Sung
Student designers of the Impact logo